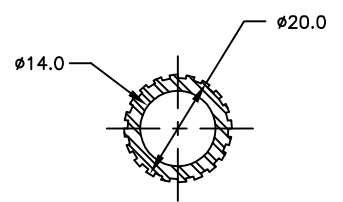
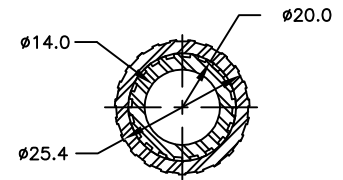


**SECTION D-D**

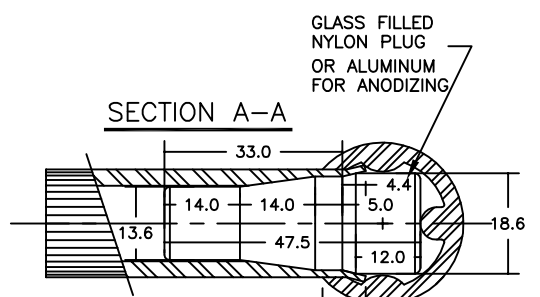
DETAIL 1  
 LADDER SPLICING METHOD  
 FOR LADDERS OVER 6.4m  
 [21 FT] LONG.



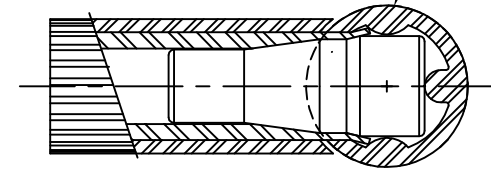
**DETAIL 2**  
**SECTION B-B**  
 6351-T6 EXTRUSION FOR:  
 RUNGS ON LADDERS 330.0  
 [13"] AND 406.0 [16"] WIDE,  
 MANHOLE STEPS.



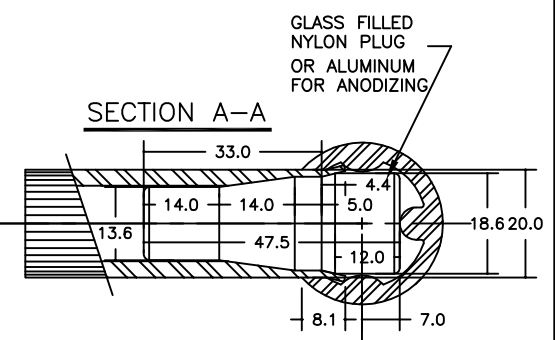
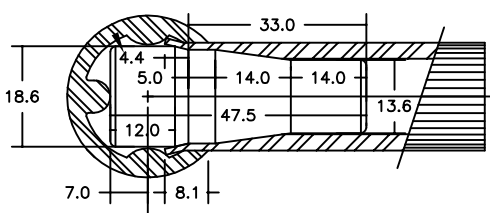
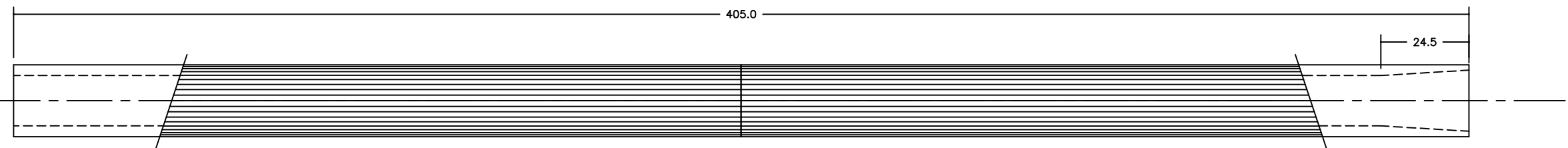
**DETAIL 3**  
**SECTION B-B**  
 6351-T6 DOUBLE EXTRUSION  
 FOR:  
 RUNGS ON LADDERS OVER  
 406.0 [16"] WIDE,  
 ALL ACCESS HANDLES,  
 SAFETY 'T' HANDLES.



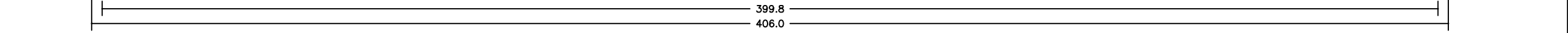
**DETAIL 4**  
 CONICAL BRACING OF  
 LADDER RUNGS ON LADDER  
 330.0 [13"] AND 406.0 [16"]  
 WIDE.



**DETAIL 5**  
 CONICAL BRACING OF  
 LADDER RUNGS ON LADDERS  
 OVER 406.0 [16"] WIDE.



**SECTION A-A**



#	QTY.	MATERIAL	DESCRIPTION

NOTE: 1) ALL ALUMINUM SURFACES IN CONTACT WITH CONCRETE SHALL RECEIVE 2 COATS OF BITUMINOUS PAINT.  
 2) WELDING SHALL CONFORM TO CSA W47.2 CSA W59.2  
 3) GROUND ROUGH EDGES SMOOTH. WELDED SUFACES REMAIN AS WELDED.

PROJECT	LOCATION
CONTRACTOR	PROJECT
ARCHT/ENGR	CONTRACTOR
QTY.	ENGINEER
PROJECT NO.	#

TITLE					
<b>MODEL #1105 SAFETY LADDER DETAILS &amp; SECTIONS</b>					
NO.	DATE	BY	DATE	DWG. BY:	PLNO.
1			##/##/##	SCJ	CATA
REVISION	SCALE	CHK'D BY:	DWG. NO.		
	NTS		200-1A		