

#	QTY.	MATERIAL	DESCRIPTION
1	3	ALUMINUM 6351-T6	20MM OD RUNGS EXT. # H-5744
2	2	ALUMINUM 6351-T6	30MM #1112 EXTENSION
3	2	ALUMINUM 6351-T6	10x127x76mm WELDED BRKT.
4	4	ALUMINUM 6351-T6	1105 BOLT-ON LADDER BRACKET x 152mm LONG
5	4	STAINLESS STEEL 304	1/2 X 3 3/4" WEDGE ANCHOR C/W NUT, FLAT & LOCK WASHER
6	2	ALUMINUM 6351-T6	30MM PIPE EXTRUSION

THIS DOCUMENT CONTAINS PROPRIETARY INFORMATION AND OTHER RIGHTS WHICH ARE THE SOLE AND EXCLUSIVE PROPERTY OF MSU MISSISSAUGA LTD.

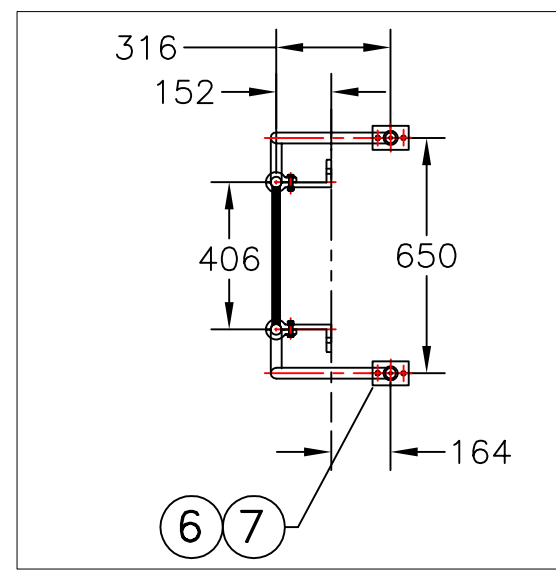
POSSESSION OF THIS MATERIAL DOES NOT CONVEY OR TRANSFER ANY RIGHTS THEREIN, AND REPRODUCTION, USE, COPYING OR DISCLOSURE TO OTHERS IS FORBIDDEN WITHOUT THE PRIOR WRITTEN CONSENT OF AN OFFICER OF MSU MISSISSAUGA LTD.

© MSU MISSISSAUGA LTD. - JULY 23RD, 2014

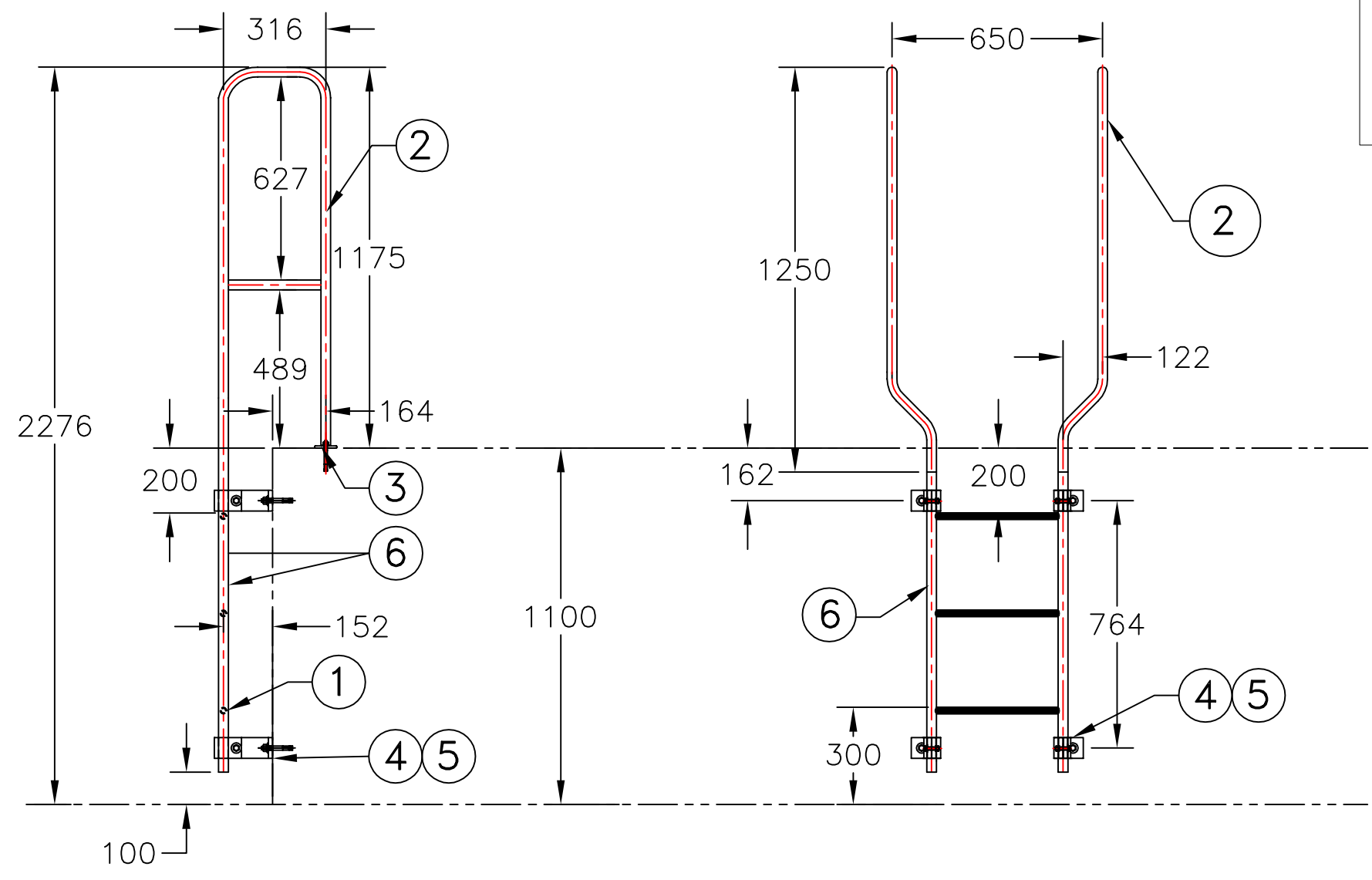
NOTE: 1) WELDING SHALL CONFORM TO CSA W47.2 & CSA W59.2
 2) GROUND ROUGH EDGES SMOOTH.

PROJECT	LOCATION PROJECT	
CONTRACTOR	CONTRACTOR	
ARCHT/ENGR	ENGINEER	
QTY.	#	PROJECT NO. #

TITLE					
1112 ENTRY & EXIT LADDER					
NO.	DATE	BY	DATE	DWG. BY:	PL. NO.
1			##/##/##	SCJ	CATA
2			SCALE	CHK'D BY:	DWG. NO.
			NTS		1112



PLAN VIEW



SIDE VIEW

FRONT VIEW