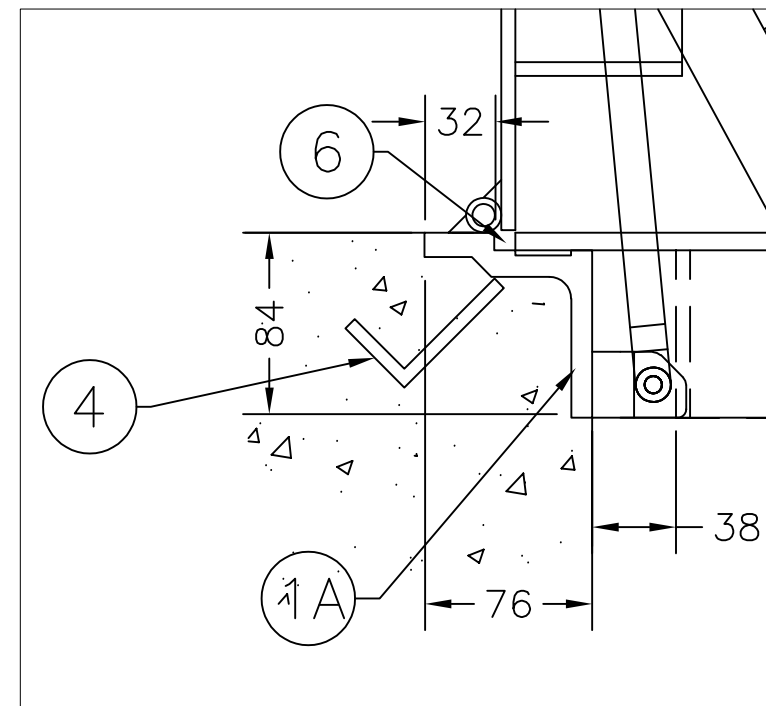


DETAIL "F1"



DETAIL "F2"

MSU
MISSISSAUGA LTD.
PHONE: (905) 823-4340
WATTS: (800) 268-5336
WEBSITE: www.msmississauga.com

#	QTY.	MATERIAL	DESCRIPTION
1	4	ALUMINUM 6061-T6	FRAME EXTRUSION # S8984 C/W NEOPRENE SEAL
2	1	ALUMINUM 6061-T6	6.4mm TREAD PLATE
3	8	ALUMINUM 6061-T6	76X6mm FLAT BAR REINFORCING
4	12	ALUMINUM 6061-T6	6X38X64 ANGLE CAST-IN ANCHOR
5	3	STAINLESS STEEL 316	SOUTHCO COMPRESSION LATCH C/W OPENING KEY
6	3	STAINLESS STEEL 316	WELD ON HINGE HINGE
7	1	STAINLESS STEEL 316	90° HOLD OPEN ARM
8	1	STAINLESS STEEL 316	GAS SPRING ASSIST CYLINDER C/W ALUM. MOUNTING BRACKETS
9	1	ALUMINUM 6061-T6	10MM ROD FORMED DROP HANDLE C/W SEALED UNDERSIDE BOX

THIS DOCUMENT CONTAINS PROPRIETARY INFORMATION AND OTHER RIGHTS WHICH ARE THE SOLE AND EXCLUSIVE PROPERTY OF MSU MISSISSAUGA LTD.

POSSESSION OF THIS MATERIAL DOES NOT CONVEY OR TRANSFER ANY RIGHTS THEREIN, AND REPRODUCTION, USE, COPYING OR DISCLOSURE TO OTHERS IS FORBIDDEN WITHOUT THE PRIOR WRITTEN CONSENT OF AN OFFICER OF MSU MISSISSAUGA LTD.

© MSU MISSISSAUGA LTD. - JULY 23RD, 2014

- NOTE: 1) ALL ALUMINUM SURFACES IN CONTACT WITH CONCRETE SHALL RECEIVE 2 COATS OF BITUMINOUS PAINT.
2) WELDING SHALL CONFORM TO CSA W47.2 & CSA W59.2
3) GROUND ROUGH EDGES SMOOTH. WELDED SURFACES REMAIN AS WELDED.

PROJECT	LOCATION PROJECT
CONTRACTOR	CONTRACTOR
ARCHT/ENGR	ENGINEER
QTY. 1	PROJECT NO. #

TITLE					
MSU TYPE-C GAS-TIGHT HATCH					
REVISION	NO.	DATE	BY	DATE	DWG. BY: SCJ
▲				###/###	PLNO. CATA
				SCALE NTS	CHK'D BY: DWG. NO. GT-1