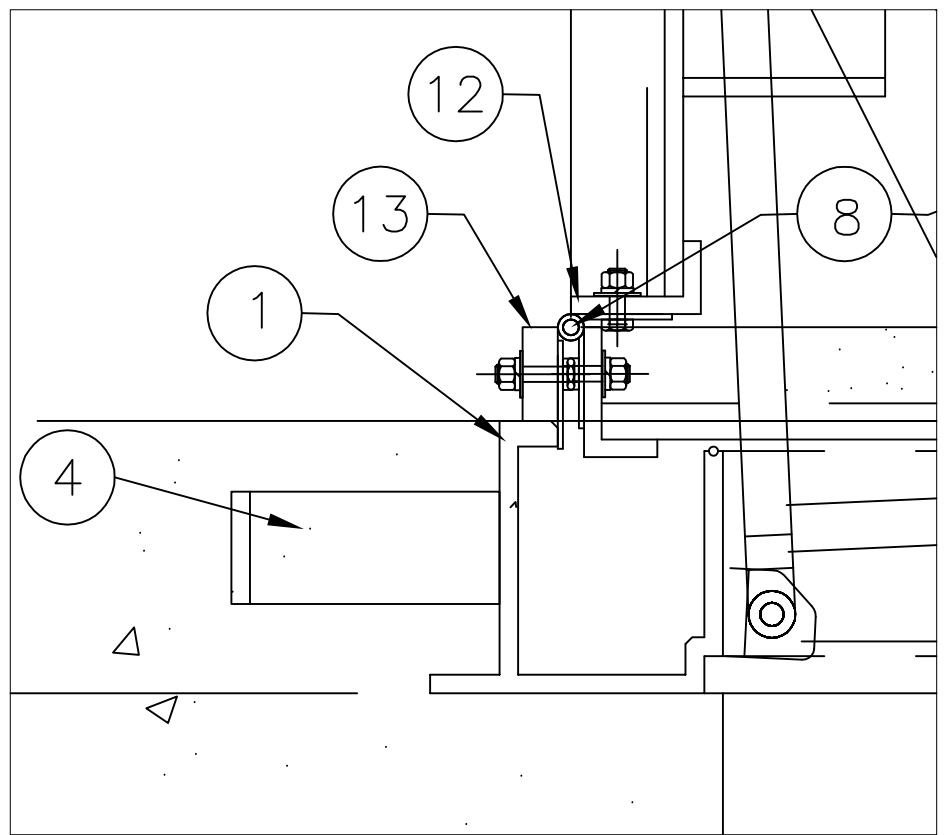


DETAIL A-A



DETAIL B-B

- NOTE: 1) ALL ALUMINUM SURFACES IN CONTACT WITH CONCRETE SHALL RECEIVE 2 COATS OF BITUMINOUS PAINT.
 2) WELDING SHALL CONFORM TO CSA W47.2 & CSA W59.2
 3) REINFORCED TO WITHSTAND A LIVE LOAD OF 300 LBS/SQ.FT (14.4kPa) WITH MAX. DEFLECTION OF 1/150th OF THE SPAN.

#	QTY.	MATERIAL	DESCRIPTION
1	4	ALUMINUM 6351-T6	FRAME EXTRUSION #P5709-1
2	1	ALUMINUM 6061-T6	3/8" PLATE
3	6	ALUMINUM 6061-T6	3/8" X 3" REINFORCING BARS
4	6	ALUMINUM 6061-T6	1 1/2 X 2 1/2 X 1/4" CAST ANCHOR 30MM WIDE
5	1	ALUMINUM 6061-T6	RECESSED HANDLE C/W SEALED UNDERSIDE BOX
6	1	BLACK CORD NEOPRENE	PERIMETER SEALING GASKET (INT.)
7	2	STAINLESS STEEL 316	GAS SPRING ASSIST CYLINDER C/W ALUM. MOUNTING BRACKETS
8	1	STAINLESS STEEL 304	CONT. FORMED HINGE C/W 1/4" TAMPERPROOF FASTENERS &
9	1	STAINLESS STEEL 316	90 DEG. HOLD OPEN ARM C/W 1/4" ALUMINUM ROD HANDLE
10	1	STAINLESS STEEL 316	SLAM LOCK C/W ALUM. REMOVABLE BRASS PLUG AND 2 OPENING TOOLS
11	N/A	ALUMINUM 6061-T6	1 1/2" NOM. PIPE HALF-COUPLING C/W 1 1/2" ABS ADAPTER
12	3	ALUMINUM 6351-T6	1 1/4 x 1 1/4 x 1/4" ANGLE TO BE WELDED TO TREAD PLATE
13	4	ALUMINUM 6061-T6	1/2 X 1 1/4 FLAT BAR WELDED TO ITEM #1
14	30	ALUMINUM 6061-T6	1/2 X 1/2 X 1/8" ANGLE WELDED WITH ITEM #2
15	1	ALUMINUM 6061-T6	1 3/4 X 1 3/4 X 1/4" ANGLE WELDED TO ITEM #2

PAN DEPTH IS 1 1/4"

THIS DOCUMENT CONTAINS PROPRIETARY INFORMATION AND OTHER RIGHTS WHICH ARE THE SOLE AND EXCLUSIVE PROPERTY OF MSU MISSISSAUGA LTD.

POSSESSION OF THIS MATERIAL DOES NOT CONVEY OR TRANSFER ANY RIGHTS THEREIN, AND REPRODUCTION, USE, COPYING OR DISCLOSURE TO OTHERS IS FORBIDDEN WITHOUT THE PRIOR WRITTEN CONSENT OF AN OFFICER OF MSU MISSISSAUGA LTD.

© MSU MISSISSAUGA LTD. - JULY 23RD, 2014

PROJECT	LOCATION PROJECT
CONTRACTOR	CONTRACTOR
ARCHT/ENGR	ENGINEER
CITY: 1	PROJECT NO. #

TITLE		ALLUMINUM ACCESS HATCH			
		MSU TYPE-MPAN HATCH 900 X 900MM			
NO.	DATE	BY	DATE	DWG. BY	PLN. NO.
1			##/##/##	CDT	CATA
SCALE		NTS		DWG. NO. MPAN-1	