

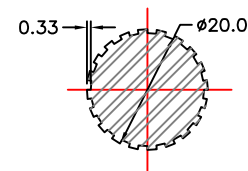


MSU
MISSISSAUGA LTD.

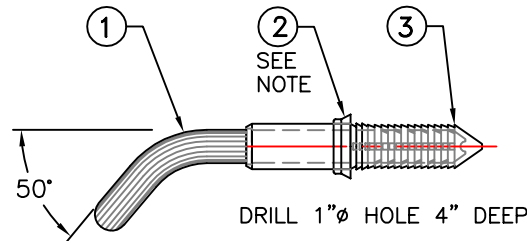
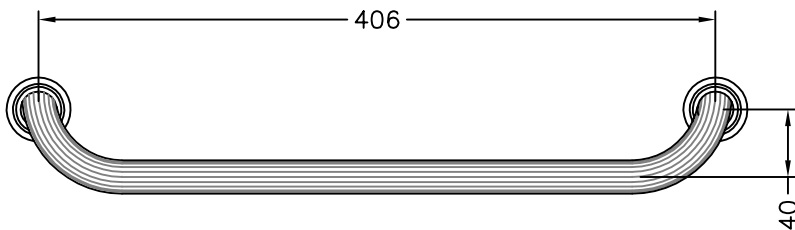
PHONE: (905) 823-4340

WATTS: (800) 268-5336

WEBSITE: www.msmississauga.com



EXTRUSION DETAIL



#	QTY.	MATERIAL	DESCRIPTION
1	1	ALUMINUM 6351-T6	20.0 O.D. 6-8415 ALUM EXTRUSION
2	NA	PVC	38.5 OD X 27.5 ID ADJUSTABLE COVERING ROSETTE
3	2	ORANGE POLYETHYLENE	27.5 DIA. X 140.0 LG ISOLATING ANCHOR SLEEVE

THIS DOCUMENT CONTAINS PROPRIETARY INFORMATION AND OTHER RIGHTS WHICH ARE THE SOLE AND EXCLUSIVE PROPERTY OF MSU MISSISSAUGA LTD.

POSSESSION OF THIS MATERIAL DOES NOT CONVEY OR TRANSFER ANY RIGHTS THEREIN, AND REPRODUCTION, USE, COPYING OR DISCLOSURE TO OTHERS IS FORBIDDEN WITHOUT THE PRIOR WRITTEN CONSENT OF AN OFFICER OF MSU MISSISSAUGA LTD.

© MSU MISSISSAUGA LTD. - JULY 23RD, 2014

NOTE: 1) ROSETTE OPTIONAL

PROJECT	PROJECT LOCATION	
CONTRACTOR	CONTRACTOR	
ARCHT/ENGR	ENGINEER	
QTY.	#	PROJECT NO. #

TITLE						MODEL 355 SOLID CLIMBING STEP DRIVE-IN STYLE		
NO.	DATE	BY	DATE	SCALE	DRW. BY	PLNG	CATA	
△				NTS	SCJ		355	