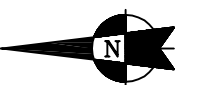
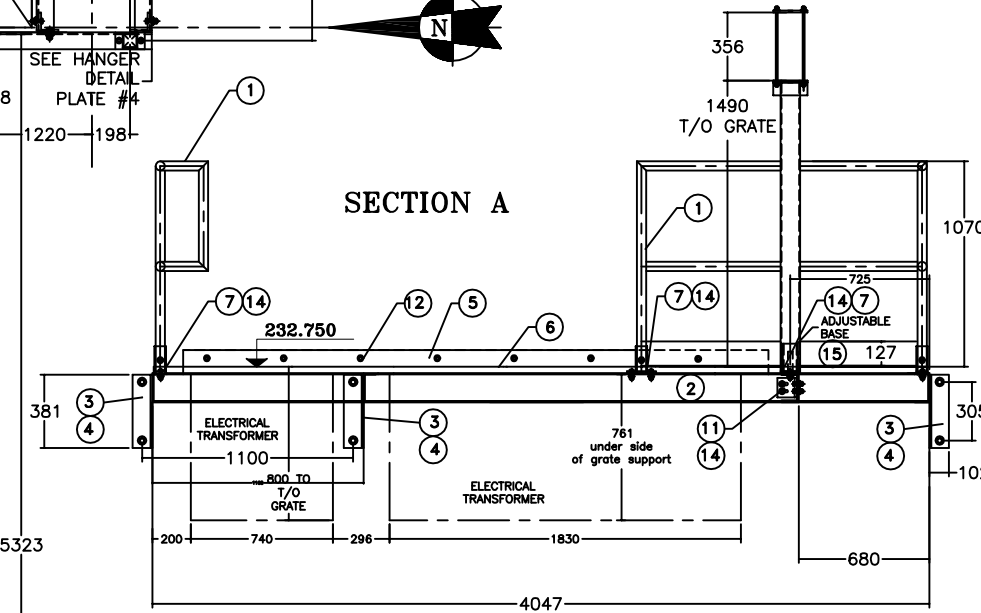


**SECTION B**



**SECTION A**



REGISTERED PROFESSIONAL ENGINEER  
**A. SOHRABI**  
 100056832  
 Aug. 17, 2010  
 PROVINCE OF ONTARIO

**VIRTUAL engineers**  
 Consulting Engineers  
 15 WERTHEIM CRT. # 402 TEL: (905) 707-0704  
 RICHMOND HILL, ONTARIO L4B 3H7 www.virtualengineers.com  
 1-(888) 337-8233  
 www.virtualengineers.com

THIS DOCUMENT CONTAINS PROPRIETARY INFORMATION AND OTHER RIGHTS WHICH ARE THE SOLE AND EXCLUSIVE PROPERTY OF MSU MISSISSAUGA LTD.

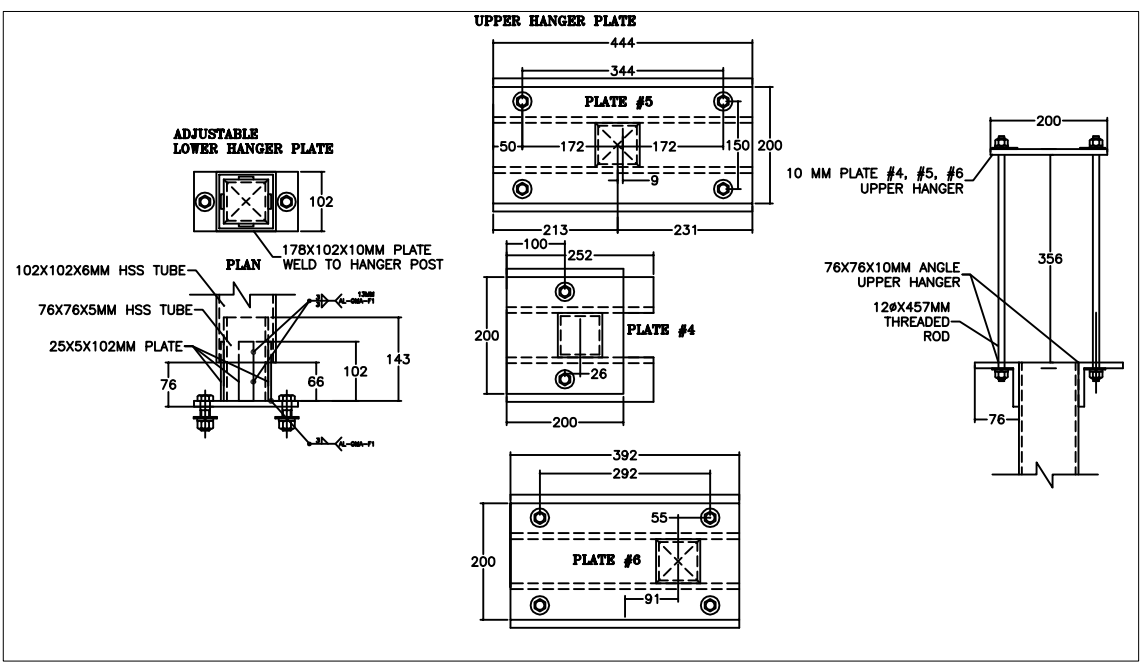
POSSESSION OF THIS MATERIAL DOES NOT CONVEY OR TRANSFER ANY RIGHTS THEREIN, AND REPRODUCTION, USE, COPYING OR DISCLOSURE TO OTHERS IS FORBIDDEN WITHOUT THE PRIOR WRITTEN CONSENT OF AN OFFICER OF MSU MISSISSAUGA LTD.

© MSU MISSISSAUGA LTD. - JULY 23RD, 2014

**MSU MISSISSAUGA LTD.**  
 PHONE: (905) 823-4340  
 WATTS: (800) 268-5336  
 WEBSITE: www.msumississauga.com

#	QTY.	MATERIAL	DESCRIPTION
1	AS REQ	ALUMINUM 6061-T6	1 1/2 SCH-40 PIPE 1.9 O.D.
2	13	ALUMINUM 6061-T6	152 X 89 X 10mm C-CHANNEL MAIN SUPPORTS
3	22	STAINLESS STEEL 316	16Ø X 152MM ADHESIVE ANCHOR
4	2	ALUMINUM 6061-T6	152x102x10mm ANGLE BRACE WELD TO ITEM #1 - 3 SIDES FOR CANTILEVER SUPPORT
5	5	ALUMINUM 6061 - T6	LLV-127 X 76 X 8mm SUPPORT
6	15	ALUMINUM GRATE	32MM BORDEN B# GRATE
7	16	ALUMINUM 6061-T6	2 1/2" SCH.80 SOCKET C/W SCREW WELD TO 152X76X10 BASE PLATE
8	16	STAINLESS STEEL 316	5/8 X 2" HEX BOLT C/W NUT, LOCK AND FLAT WASHER
9	1	ALUMINUM 6061-T6	76 X 76 X 6MM ANGLE SUPPORT
10	4	ALUMINUM 6061-T6	1 1/2 SCH-40 PIPE SPLICE RIVETED TO RAIL AND WELD TO 152X76X10 BASE PLATE
11	32	ALUMINUM 6061-T6	12 X 102 X 102 ANGLE BRACKET 102mm LG.
12	14	STAINLESS STEEL 316	12ØX95MM ADHESIVE ANCHOR C/W NUT, LOCK AND FLAT WASHER
13	1	ALUMINUM 6061-T6	3/16" PROOF COIL CHAIN C/W HOOP WELDED TO POST, WICHARD SNAP HOOKS. EYE BOLTS & ANCHOR
14	10	STAINLESS STEEL 304	12ØX44MM HEX BOLTS C/W NUT, LOCK AND FLAT WASHER
15	AS REQ	ALUMINUM 6061-T6	6X127MM KICK PLATE

NOTE: 1) ALL ALUMINUM SURFACES IN CONTACT WITH CONCRETE SHALL RECEIVE 2 COATS OF BITUMINOUS PAINT.  
 2) WELDING SHALL CONFORM TO CSA W47.2-R2008 CSA W59.2-R2008  
 3) GROUND ROUGH EDGES SMOOTH. WELDED SURFACES REMAIN AS WELDED.  
 4) THIS PLATFORM HAS BEEN DESIGNED TO WITHSTAND A LIVE LOAD OF 2.4KPa (50 LBS./SQ. FT.) WITH MAX. DEFLECTION OF 1/150 OF THE SPAN HANDBRAILS HAVE BEEN DESIGNED IN ACCORDANCE WITH THE OBC 4.1.10.1 (1) (c) & (2) & (4)



PROJECT	LOCATION
CONTRACTOR	PROJECT
ARCHT/ENGR	CONTRACTOR
QTY.	ENGINEER
1 ASSEMBLY	PROJECT NO. #

TITLE				MSU CANTELEVERED/HANGER PLATFORMS AND RAILINGS			
NO.	DATE	BY	DATE	DWG. BY:	PL. NO.		
1			##/##/##	SCJ	CATA		
SCALE			NTS			DWG. NO. GSL-6	