

REVIEWED
 VIRTUAL#25486

 www.virtualengineers.com
 200 TOWN CENTRE BLVD. # 203 TEL: (905) 877-0704
 MARKHAM, ONTARIO L3R 9Z5 1-800-337-9333
 CAN. REG. 419-902

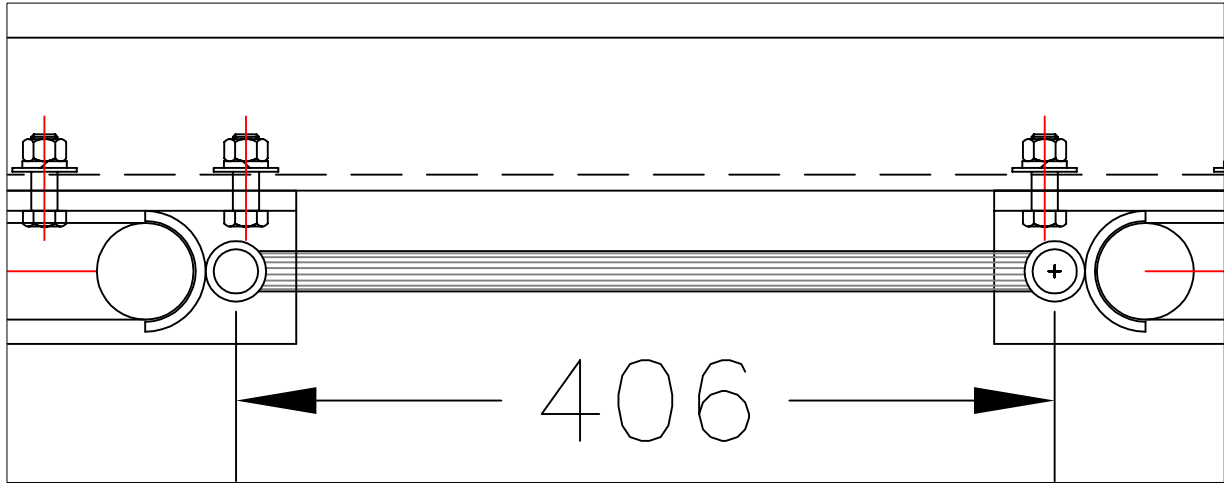
#	QTY.	MATERIAL	DESCRIPTION
1	7	SEE DWG. 200-1A	20.0 OD. X 14.0 ID. 6-8435 ALUMINUM EXTRUSION
2	2	ALUMINUM 6351-T6	30.0 MSU 1105 EXTRUSION ALUMINUM EXTRUSION.
3	4	ALUMINUM 6061-T6	102X102X12MM BRACKET WELD TO ITEM #4
4	4	ALUMINUM 6061-T6	42MM I.D. RAIL SOCKET WELD TO RAIL & ITEM #3
5	4	STAINLESS STEEL 304	1/2"x3 3/4" WEDGE ANCHOR c/w NUT, FLAT & LOCK WASHER
6	4	ALUMINUM 6061-T6	2" SCH. 80 HALF PIPE LADDER GUIDE WELED TO ITEM #2
7	1	ALUMINUM 6061-T6	LADDER STABILIZER BRACKET C/W 1/2 HARDWARE

THIS DOCUMENT CONTAINS PROPRIETARY INFORMATION AND OTHER RIGHTS WHICH ARE THE SOLE AND EXCLUSIVE PROPERTY OF MSU MISSISSAUGA LTD.

POSSESSION OF THIS MATERIAL DOES NOT CONVEY OR TRANSFER ANY RIGHTS THEREIN, AND REPRODUCTION, USE, COPYING OR DISCLOSURE TO OTHERS IS FORBIDDEN WITHOUT THE PRIOR WRITTEN CONSENT OF AN OFFICER OF MSU MISSISSAUGA LTD.

© MSU MISSISSAUGA LTD. - JULY 23RD, 2014

NOTE: 1) ALL ALUMINUM SURFACES IN CONTACT WITH CONCRETE SHALL RECEIVE 2 COATS OF BITUMINOUS PAINT.
 2) WELDING SHALL CONFORM TO CSA W47.2 CSA W59.2
 3) GROUND ROUGH EDGES SMOOTH. WELDED SURFACES REMAIN AS WELDED.



PROJECT	LOCATION PROJECT	
CONTRACTOR	CONTRACTOR	
ARCHT/ENGR	ENGINEER	
QTY.	1	PROJECT NO. #

TITLE					
MODEL #1105 EXIT & ENTRY LADDER					
NO.	DATE	BY	DATE	DWG. BY:	PLNO.
1			##/##/##	SCJ	CATA
SCALE				DWO. NO.	
NTS				RETRACT	